

Car Plate

EMFs in cars affect both the driver & passengers, causing them to be tired & irritable. The Car Plate was developed to alter the EMFs in cars, making them more harmonious, the car no longer pushes its way through the air but glides through with no resistance, this can cause a saving of about 10% in fuel usage, but **its not** the reason for having a Car Plate. Although hybrid cars need SOP placed over batteries.



The area covered by a Car Plate is;
6x6 mtr square (20x20feet square)

3mtr (9ft) from the concave side 1mtr (3ft) from the dome.

The Car Plate can also be used to:

1. Enhancing treatment:

Place under massage table concave side up this puts the client into Alpha thereby making any energetic or hands on (massage etc) work more effective.

2. Helping small areas:

Used to treat the EMR in a small flat or one room office.

3. Treat amalgams:

Can be used to treat amalgams in the teeth. Hold the plate about 5 centimeters (2 inches) away from the face dome side up. SLOWLY fan the face in an up & down or side to side motion all around the teeth/jaw area.



After a minute or so you will develop a metal taste in the mouth. Continue fanning until the metal taste disappears.



This will stop the electrolysis, which contributes to amalgam leak.

Car Plate Continued



4. Clear radiation from X-Rays etc.

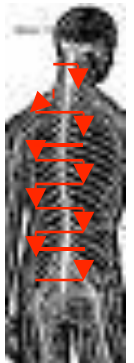
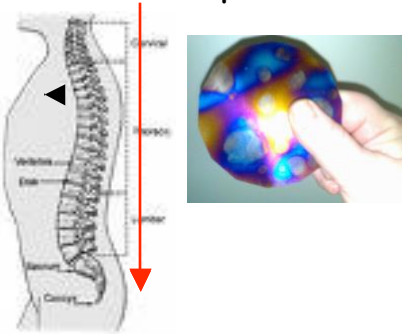
The body stores radiation in the spinal column to clear this;

Face the person's back, hold the Car Plate vertically edge-on to the backbone, move just 3cm (1in) either side of the spine.

Start at the base of the neck

& go down side moving the plate from side to, stop at the bottom.

Now move the plate away, & go up to the neck & start again.



As you continue ask the person if they can feel any tingling or heat anywhere in their body.



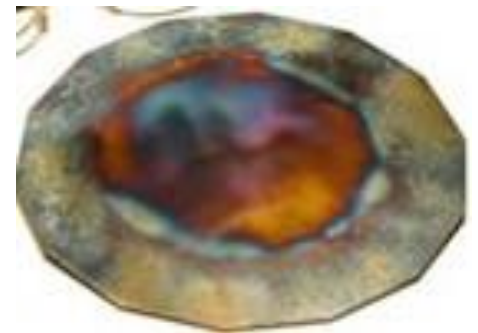
Once they do say they can, continue moving the plate either side of the spine until the person says these energy feelings have stopped.



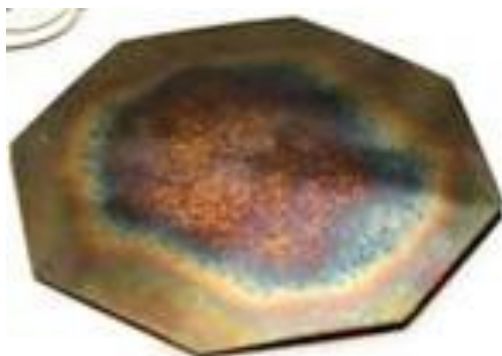
Large 14sided Plate (L14P) Large Octagonal Plate (LOP)

The differences between the Large 14sided Plate (L14sP) & the Large Octagonal Plate (LOP)

- 1 **The Large 14sided Plate** is 1.6mm thick the 14sides which has a very calming influence on its surroundings as well as taking care of **EMR** air-born radiations & undergroundwater.



- 2 **The Large Octagonal Plate** is 1.6mm thick 8sided & as with the other 8-sided plates in Tesla's range works just that bit harder. It is extremely good in areas of Train or Tram lines close by.



The energy from a L14sP and LOP have two different dimensions:

- (a) Vertical & horizontal i.e. spanning approximately 20mtr (65ft) from the concave side & approximately 8mtr (26ft) from the dome side.
- (b) Encompassing an area approximately 1/3htr (1acre) outwards, thereby affecting electrical transformers (LOP) close by.